

# THE COOL SCHOOL RAP

**COLD FRONT COMING!**

WOW! IT'S SO HOT TODAY!

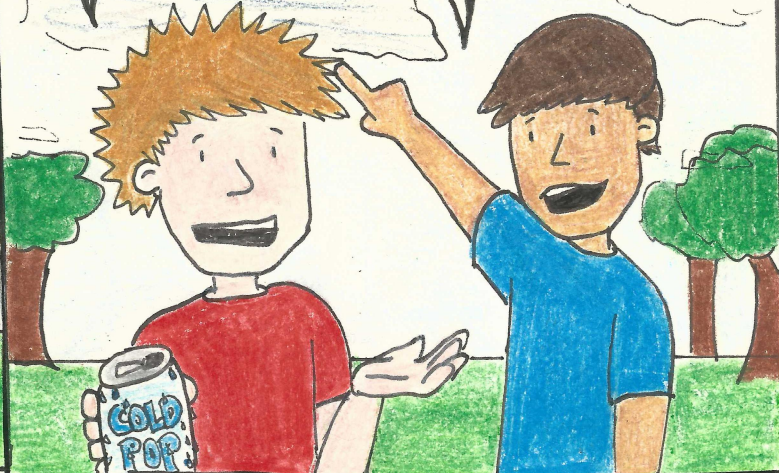
DON'T WORRY. IT WILL COOL DOWN AND RAIN SOON.



Laura L. Balliett  
09-07-14

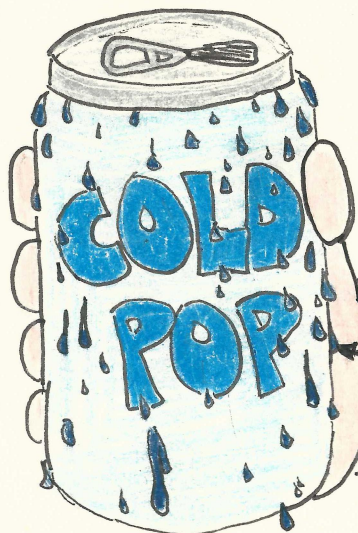
HOW DO YOU KNOW?

RAIN CLOUDS ARE A SIGN THAT CONDENSATION IS OCCURRING. A COLD FRONT MUST BE COMING.



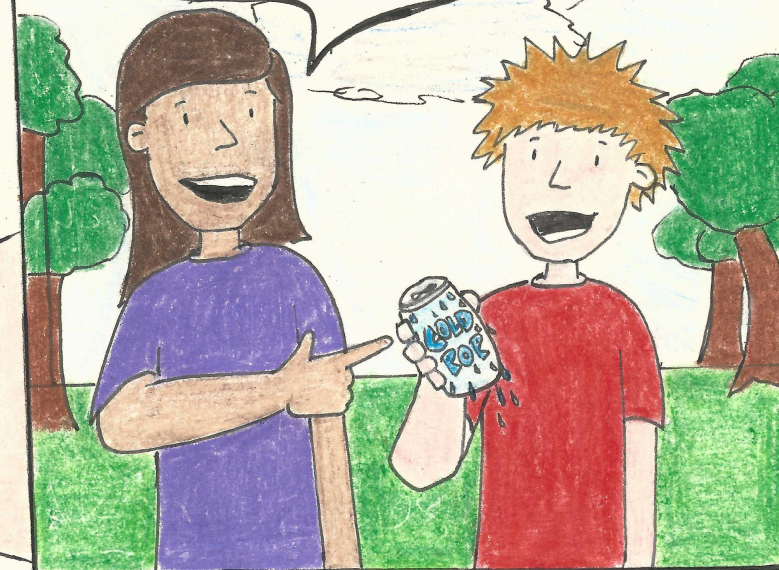
IT IS JUST LIKE THE CONDENSATION ON YOUR POP CAN. WHEN THE COLD CAN HITS THE WARM AIR, INVISIBLE WATER MOLECULES IN THE AIR CONDENSE.

YOUR POP CAN MUST HAVE HIT A LOT OF WATER MOLECULES!



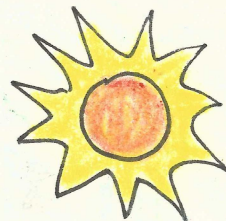
**WARM AIR**

CONDENSATION



**COLD AIR MASS**

**WARM AIR MASS**



MY POP CAN IS JUST LIKE A COLD FRONT!

RIGHT! AND THOSE DROPLETS ARE JUST LIKE RAIN!

JUST LIKE WITH THE POP CAN, WHEN A COLD AIR MASS HITS A WARM AIR MASS, CONDENSATION OCCURS, BUT ON A MUCH BIGGER SCALE.

